

**NEW ECHO CORDLESS
TOP-HANDLE CHAINSAW
LAUNCH IN SUMMER 2025**



**HIGH TORQUE
VERSATILE
AFFORDABLE**

DCS-3000T
UNIVERSAL TOP-HANDLE CHAINSAW



FEATURES



Product code: 15791200
Product name: DCS-3000T
EAN code: 4934110717151

**DROP
PREVENTION NUTS**
**SIDE ACCESS
CHAIN TENSIONER**



**SPEED CUT NANO 30CM
AS STANDARD**

OREGON 80TXL chain and
12" sprocket nose bar

ECHO FLIP CAP

Flip lever cap
for easy opening

**TRANSLUCENT
OIL TANK**

For quick level checks

**POWERFUL
BRUSHLESS MOTOR**

High torque, long life
and low maintenance

**PATENTED DIAGONAL HANDLE
WITH LANYARD HOOK**

Convenient and
familiar ECHO layout



**ERGONOMIC
KNURLED HANDLE**

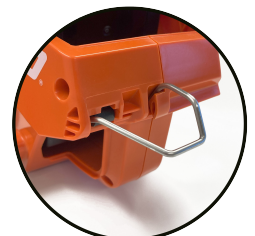
Best grip in all conditions
integrated thumb and
palm rests

**CHANGEABLE MACHINE
CONFIGURATION**

Choice between lightweight
or powerful battery

**PATENTED
QUICKDRAW HOOK**

To hook and unhook
with one hand



Specifications, descriptions, and illustrative materials in this literature are as accurate as known at the time of publication, but are subject to change without notice.

CONFIDENTIAL, FOR DISTRIBUTOR USE ONLY

SPECS & BENEFITS

Voltage max./rated (V)	Rated power output (kW)	Dry weight* ¹ (kg)	Chain oil tank capacity (mL)	Saw chain pitch (inch)	Guide bar gauge (inch/mm)	Applicable bar length (cm/inch)	Runtime (min)
56	1.06 (LBP-56V125)	3.0	270	.325	0.043	Standard 30 / 12"	21 (LBP-56V125)
- 50.4	1.36 (LBP-56V250)				- 1.1	Optional 35 / 14"	50 (LBP-56V250)

*¹ Unit without battery, guide bar and chain.

Dry weight of tool is rounded off, therefore not always the sum of both parts.

CORDLESS UNIVERSAL TOP-HANDLE CHAINSAW

The new **DCS-3000T** is an ECHO budget universal battery-powered top-handle chainsaw. With impressive high torque, it includes all the ECHO signature chainsaw features. It provides versatility for pruning, small removals or take-down tasks, which makes it a perfect saw for beginner arborists or back-up tool for skilled professionals.

USER CONVENIENCE

- Excellent control whilst cutting and enhanced safety thanks to the high torque motor
- Better manoeuvrability with the knurled grip surface, integrated thumb and palm rests
- Comfort and safety improved with the patented QuickDraw hook
- Enhanced convenience thanks to ECHO diagonal handle and lanyard hook
- Drop prevention nuts and side chain access tensioner as standard for quick chain adjustment
- Easy level checks thanks to the translucent oil tank
- ECHO flip lever cap for easy opening action
- Optional spikes can be added, common with the DCS-3500T and other models

TECHNICAL FEATURES

- Speed cut nano 30cm optimal cutting equipment configuration, also certified for 35cm configuration
- Chain speed of up to 21.0m/s for smooth and clean cutting
- Maintenance free, durable and highly efficient brushless outer-rotor motor
- Changeable machine configuration by choosing between the two batteries (for lower weight or more power)



Specifications, descriptions, and illustrative materials in this literature are as accurate as known at the time of publication, but are subject to change without notice.



CONFIDENTIAL, FOR DISTRIBUTOR USE ONLY