

**NEW ECHO CORDLESS
TOP-HANDLE CHAINSAW
LAUNCH IN SUMMER 2025**



**LIGHTWEIGHT
EASE OF USE
HIGH POWER**

**DCS-3500T
TOP-HANDLE REMOVAL CHAINSAW**



FEATURES



SPEED CUT NANO 35CM AS STANDARD

OREGON 80TXL chain and
14" sprocket nose bar



NEW THROTTLE LOCKOUT TECHNOLOGY

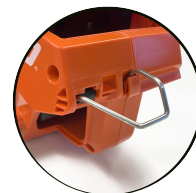
2-step safety system with
convenient single-finger activation

ERGONOMIC KNURLED HANDLE

Best grip in all conditions
integrated thumb and palm rests

UPDATED LARGER SPIKES

Better control for
precise cutting



PATENTED QUICKDRAW HOOK

To hook and unhook
with one hand

ECHO FLIP CAP

Flip lever cap
for easy opening

TRANSLUCENT OIL TANK WITH AIR EXPANSION CHAMBER

Quick level checking

PATENTED DIAGONAL HANDLE WITH LANYARD HOOK

Convenient and familiar ECHO layout



TOP ACCESS ADJUSTABLE OIL PUMP

Flow rate can be adjusted
for any conditions

DROP PREVENTION NUT & SIDE ACCESS CHAIN TENSIONER



CHANGEABLE CONFIGURATION FOR PRUNING OR TAKE-DOWNS

Choice between lightweight
or powerful batteries in
combination with shorter and
longer bars

NO GAP BETWEEN ROLLER CHAIN CATCHER AND SPROCKET GUARD

Prevents accidental climbing
rope damage

AIR INLET FILTER

Prevents entry of dirt
and dust

WIDER AND SMOOTHER SPROCKET GUARD GEOMETRY

Reduced possibility
of chip clogging

Specifications, descriptions, and illustrative materials in this literature are as accurate as known at the time of publication, but are subject to change without notice.

Product code: 15864200
Product name: DCS-3500T
EAN code: 4934110717175

CONFIDENTIAL, FOR DISTRIBUTOR USE ONLY

SPECS & BENEFITS

Voltage max./rated (V)	Rated power output (kW)	Dry weight* ¹ (kg)	Chain oil tank capacity (mL)	Saw chain pitch (inch)	Guide bar gauge (inch/mm)	Applicable bar length (cm/inch)	Runtime (min)
56	0.98 (LBP-56V125)	2.2	240	.325	0.043	Standard 35 / 14"	25 (LBP-56V250)
- 50.4	1.81 (LBP-56V250)				- 1.1	Optional 30 / 12" 40 / 16"	51 (LBP-56V250)

*¹ Unit without battery, guide bar and chain.

Dry weight of tool is rounded off, therefore not always the sum of both parts.

CORDLESS REMOVAL TOP HANDLE CHAINSAW

The new **DCS-3500T** is the most powerful X-Series battery-powered top-handle removal chainsaw ever made by ECHO. One of the lightest of its kind, it offers enhanced manoeuvrability with higher work comfort in multiple positions and enhances work safety. This top-handle chainsaw is the perfect combination of high chain speed and purposely distributed high torque, allowing jobs such as heavy removal, pruning or arborist tasks.

USER CONVENIENCE

- Excellent manoeuvrability made possible by the overall lightness of the tool, ensuring lower fatigue
- Convenient usage in any position with the 2-step safety system activated by a single finger
- Possibility of changing the configuration for pruning (light battery and small bar) or for take-downs (powerful battery and long bar)
- Comfort and safety improved with the patented QuickDraw hook
- Enhanced convenience thanks to ECHO diagonal handle and lanyard hook
- Drop prevention nut and side chain access tensioner as standard for quick chain adjustment
- Translucent oil tank with air expansion chamber provides quick level checks
- ECHO flip lever cap for easy opening action
- Improved safety thanks to the reduced gap between the roller chain catcher and the sprocket guard
- Updated larger spikes as standard

TECHNICAL FEATURES

- Dry weight of only 2.2kg without cutting equipment and battery
- Class-leading, additionally tuned torque control reduces stall effect, provides better control and feel in the cut
- Speed Cut Nano 35cm standard cutting equipment configuration, also certified for 30cm and 40cm configurations
- Top access adjustable oil pump to adjust the flow rate for any conditions
- Wider and smoother sprocket guard geometry reduces chip clogging
- Air inlet filter which prevents dirt and dust from entering the cooling passage, electronics and motor compartment, provides less maintenance and longer lifetime



Specifications, descriptions, and illustrative materials in this literature are as accurate as known at the time of publication, but are subject to change without notice.



CONFIDENTIAL, FOR DISTRIBUTOR USE ONLY